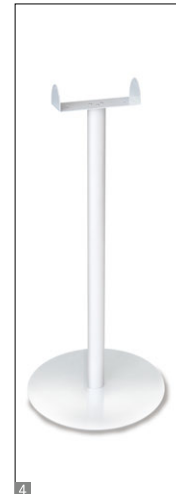
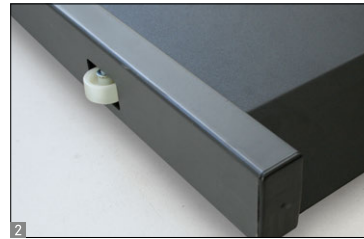


Stretcher scale KERN MWS-L

Stretcher scale with a low overall height for easy access – with EC type approval class III and approval for medical use



Your KERN specialist dealer



Features

- Verification class III (verification is optional)
- Approved as a medical device according to 93/42/EEC
- **1** Due to its large dimensions and large weighing range, it is especially suitable for weighing immobile patients on stretchers or wheelchairs as well as obese patients
- Large steel weighing plate with non-slip and wear-resistant surface
- Secure and non-slip positioning with height-adjustable rubber feet
- Level indicator to level the balance precisely
- Hold function:
When patients do not stand, sit or lie completely still, a stable weight is calculated using an average weight and this is then "frozen". This means that you have sufficient time to attend to the patient first and then take the weight reading in peace
- BMI function to determine underweight/normal weight/surplus weight
- **2** The scale can be easily transported using 2 rollers and 2 handles and does not require much storage space

- **3** Display device with two magnets on the back, ideal to fix it to metallic surfaces, e.g. to the weighing plate during transportation
- Battery- or mains-powered, rechargeable battery operation optional
- Protective working cover included with delivery

Technical data

- LCD display, digit height 25 mm
- Dimensions of display device W×D×H 210×110×50 mm
- Overall dimensions W×D×H 1500×860×68 mm
- Battery operation possible, 6×1,5 V AA, not included, operating time up to 50 h
- Mains adapter external, standard
- Cable length of display device approx. 180 cm
- Net weight approx. 40 kg

Accessories

- **4** Stand to elevate display device, height of stand approx. 950 mm, KERN MWS-A01
- Protective working cover over the display device, scope of delivery: 5 items, KERN EOB-A02S05
- Cleaning cloths, alcohol-free cloths for wipe disinfectant, quick-acting, on basis of modern quaternary ammonium compounds, and also against papova viruses. Particularly gentle on materials, and therefore very well suited for the disinfection of alcohol sensitive medical products. Fulfill the legal requirements for occupational safety in accordance with TRGS 525/540. Packaging contents 80 pcs., size 20×22 cm per cloth, KERN MYC-01
- Rechargeable battery pack internal, operating time up to 45 h, charging time approx. 14 h, KERN FOB-A08
- Interface cable RS-232C to connect an external device, KERN MPS-A08
- Matrix needle printer, KERN YKN-01
- Label printer, KERN YKE-01
- Thermal printer, KERN YKB-01N
- Further details, plenty of further accessories and suitable printers see Internet

STANDARD	OPTION	FACTORY
RS 232 MOVE BATT MULTI 2 DAYS	ACCU	M +3 DAYS

* Within the EU, official verification is mandatory by law for scales that are intended for use as a medical device. Please add this to your order. We require the location of use and the post code for the verification.

Model	Weighing range	Readability	Verification value	Weighing surface	Mandatory by law	
					Verification	
KERN	[Max] kg	[d] kg	[e] kg	mm		
MWS 300K-1LM	300	0,1	0,1	1200×800	965-129	

Pictograms

Data interface RS-232:
To connect the balance to a printer, PC or network

Hold function: When patients do not stand, sit or lie completely still, a stable weight is calculated using an average weight

Battery operation:
Ready for battery operation. The battery type is specified for each device

Rechargeable battery pack:
Rechargeable set

Universal mains adapter:
with universal input and optional input socket adapters for A) EU, CH

Verification possible:
The time required for verification is specified in the pictogram

Pallet shipment:
The time required for internal shipping preparations is shown in days in the pictogram